

You are looking at a scanned in copy of an original print manual for an Apogee Software / 3D Realms game.

This manual is presented in its original format. Please note that any references to order forms or upgrade packs are no longer relevant.

Please also be aware that the old customer & tech support information presented here is out of date. Our phone numbers and hours of operation have changed or are possibly no longer relevant (depending on the title).

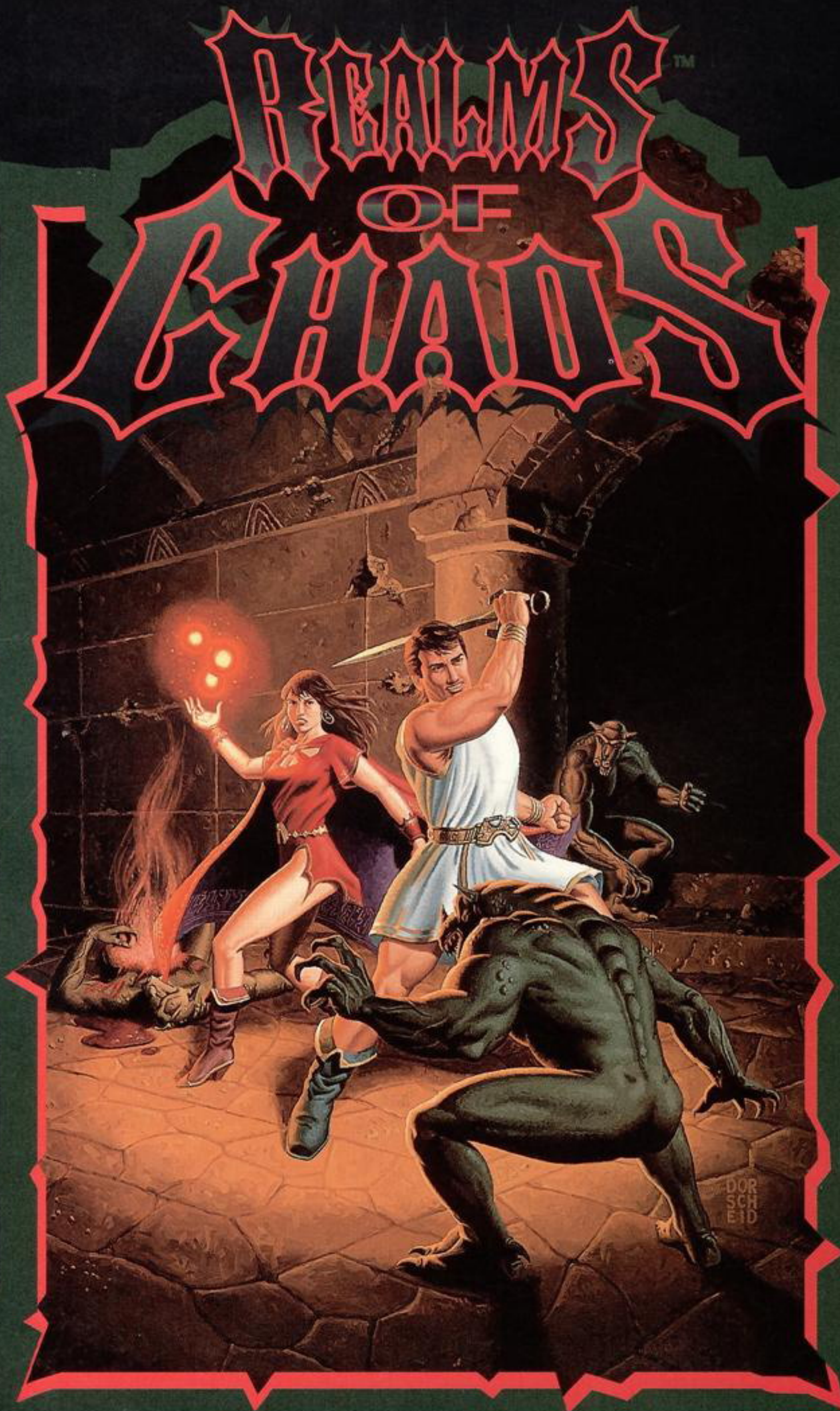
For current information, please visit our website.

Thank you.

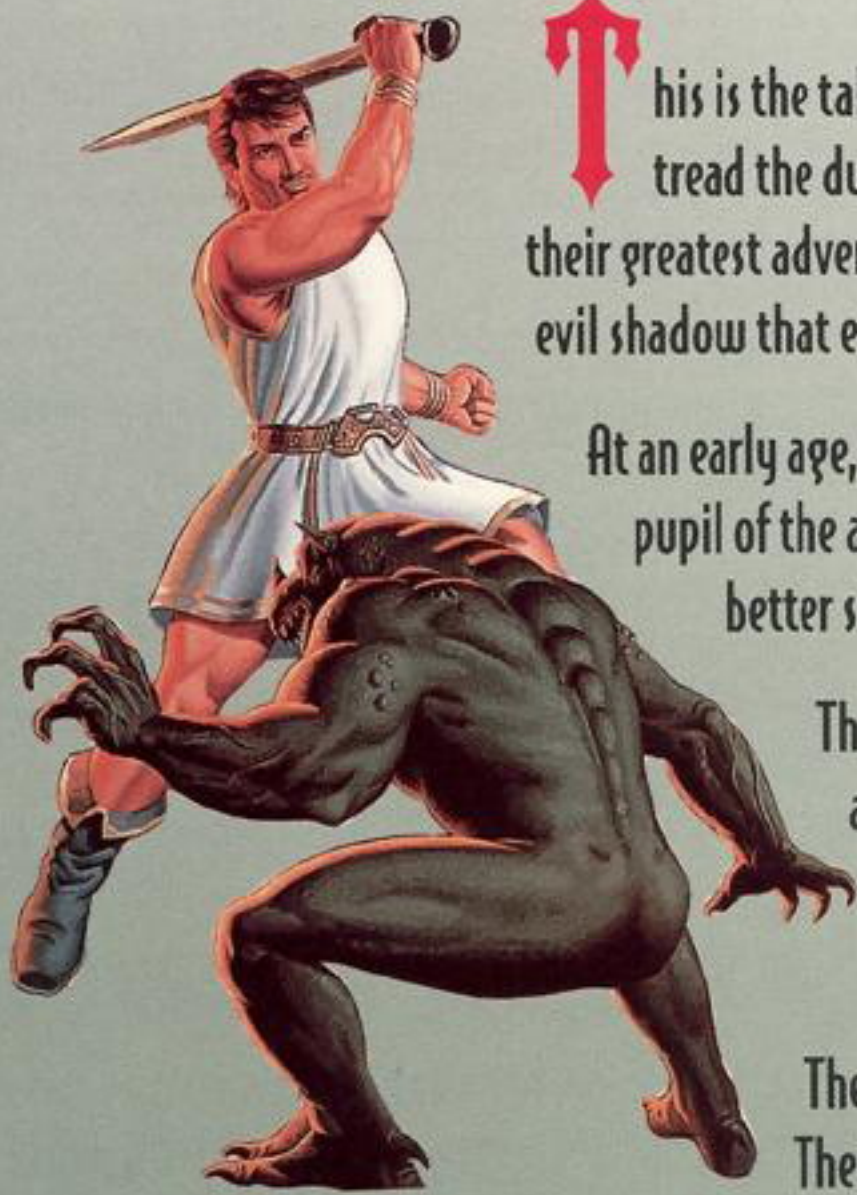
Apogee Software Ltd / 3D Realms Tech Support

March 2009

<http://www.3drealms.com>



PUBLISHED BY APOGEE SOFTWARE, LTD.



This is the tale of Endrick and Elandra, the most valiant duo ever to tread the dusty byways of Mysteria. "Realms of Chaos" chronicles their greatest adventures, wherein they save the land from the dark and evil shadow that engulfed it. Listen well to my tale...

At an early age, Elandra showed a true talent for magic, and became a pupil of the arcane arts. The brawny Endrick, however, found he was better suited to swordplay and the martial arts.

The brother and sister parted, each attending the best academies of their chosen trades. After several years of intense training, they had each become skilled masters of their art.

Their training complete, Endrick and Elandra reunited. Their skills in might and magic complemented one another, and over the years they became the most widely respected team of heroes for hire in all of Mysteria.

Inexplicably, over a period of many years, a creeping darkness spread over Mysteria. The Realms of the Mryaal, a proud race of cat people, and the Goblins, a secretive race of cave dwellers, cut off all ties with the Realm of the Humans.

During this time, a race of strange, violent beings attacked the Human Realm. The Humans rose to defend their homes, and were able to stave off the attackers. Everyone knew, however, that the beasts would return in time...

The siblings agreed to search for the source of the evil shadow ruining their world, and destroy it if at all possible. The first leg of their quest was to visit the Realms of the Mryaal and the Goblins. Perhaps the Humans' former allies had information that would lead them to the salvation of their homes.

And thus did Endrick and Elandra set off to perform brave deeds in a world gone mad.
The rest of the story is up to you...



REALMS OF CHAOS

TABLE OF CONTENTS

| | |
|------------------------------|---|
| STORY | 1 |
| SYSTEM REQUIREMENTS | 2 |
| INSTALLATION | 2 |
| MAIN MENU | 3 |
| PLAY A NEW GAME | 3 |
| UNDERTAKING THE QUEST | 4 |
| TREASURES | 4 |
| CHEAT CODES! | 5 |
| CONTROLLING THE ACTION | 5 |
| TECHNICAL SUPPORT | 6 |

PLEASE DO NOT MAKE ILLEGAL COPIES OF THIS SOFTWARE

Realms of Chaos was produced through the efforts of many people. The program was created by talented artists, designers, programmers, and musicians. Everyone along the line relies on sales of the program for their living. This program is protected by federal and international copyright.

Help preserve jobs by honoring the copyright of the program. Don't make illegal copies for others who have not paid for the right to use the program. To report copyright violations to the Software Publishers Association call **1-800-388-PIR8** or write:

Software Publishers Association
1730 M St. NW Suite 700
Washington, DC 20036-4510
Fax: 1-202-223-8756

SYSTEM REQUIREMENTS

Realms of Chaos requires an IBM or 100% compatible 386 computer with 537K of free conventional memory, a 256K VGA graphics card and 3.5 Mb of free space on a hard disk drive. Joystick and GamePad™ are optional. A wide range of sound cards are also optionally supported such as: Adlib™, Sound Blaster™, Sound Blaster Pro™, Pro Audio Spectrum 16™, Gravis UltraSound™, Wave Blaster™, Roland Sound Canvas™, Sound Man 16™, Disney Sound Source™ and any MIDI™ device (for music only).

INSTALLATION

To play *Realms of Chaos*, you must first install the game. The program's installation utility will place all of the necessary files on your hard drive. To install the game, follow these simple instructions.

1. Before installation, make backup copies of the original floppy disks and store them in a safe place. Use the backups to install.
2. Place Disk 1 (or the CD) into the appropriate disk (or CD-ROM) drive. Type the letter of the drive followed by a colon and press the ENTER key. Example: A:<ENTER>.
3. Type **INSTALL** and press the **ENTER** key.
4. Follow the instructions in the installation program.
5. After installation is complete, type **SETUP** and press the **ENTER** key to configure your controls and sound.
6. Once the setup is complete, type **ROC** and press the **ENTER** key to play the game.
(If you are using a Gravis UltraSound™, type **ROCGUS** and press the **ENTER** key to play a game.)



REALMS OF CHAOS



MAIN MENU

After the title sequence, the Main Menu screen will display. Use the up and down arrow keys to highlight your choice, then press the **ENTER** key to activate your selection.



PLAY A NEW GAME

Select this option if this is the first time you have played *Realms of Chaos*. Next, select the episode you wish to play. There are three episodes in *Realms of Chaos*, as listed below:

Revolt of the Mryaal

The Goblin Plague

Foray Into Fire

Okay, so now you selected a new game and the episode; how difficult do you want the action? The next option screen will allow you to set the difficulty level. The options are as follows:



Super easy — For the timid at heart.

Practice — Makes perfect!

Normal — Let's play.

Challenge — Watch Out!

Psycho Warrior — No more mister-nice-guy!

Once in the game, pressing the F1 key will display the *Realms of Chaos* Help screens.

CHANGE GAME OPTIONS

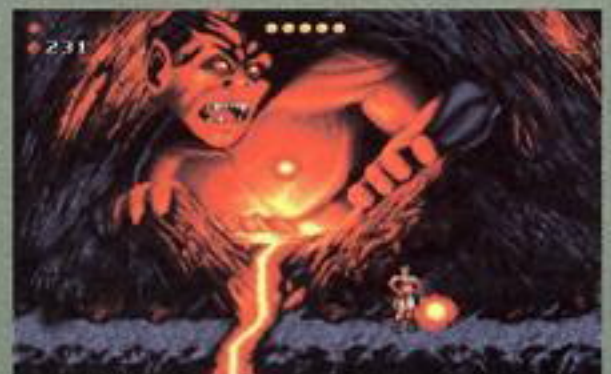
Feel the need to change something in *Realms of Chaos*? You can affect the way the game is viewed by turning messages on/off, display on/off, blood on/off, setting a blood password, and controlling the sound volume.

LOAD A GAME

If you've previously played (and saved) the game, this option allows you to re-enter at the point where you last saved. Once the Restore screen is displayed, use arrow keys up or down to pick the saved game you want to play, and press the **ENTER** key.

QUIT—RETURN TO DOS

Hopefully you will never have a need for this feature, but we put it in there just in case! Selecting this feature will return you to the DOS prompt.



REALMS OF CHAOS

UNDERTAKING THE QUEST

Endrick and Elandra agreed to search for the source of the evil shadow ruining their world, and destroy it if at all possible. Their first quest was to visit the Realms of Mryaal and the Goblins. Perhaps the Humans' former allies had information that would lead them to the salvation of their homes. During your quest, you have both heroes at your disposal, each with their own abilities, and you can switch between them during the action by pressing the **SPACEBAR**. If one is having problems clearing an area, or has taken a lot of damage, change to the other!



CLASS.....**WARRIOR**
 WEAPON...**LONGSWORD**
 STAMINA.....**3HP**
 SEX.....**MALE**
 HEIGHT.....**6'5"**
 WEIGHT.....**210 LBS**
 AGE.....**23**

ENDRICK

Begins the adventure as the stronger character. He cannot move as swiftly or jump as high as Elandra, but he makes up for it with the fierce power of his sword!

ELANDRA

Begins the adventure as the weaker character, but with the range and speed of her fireballs, as well as her lighter, more mobile body, she has the potential to exceed even her brother's powerful abilities.

CLASS.....**SORCERESS**
 WEAPON.....**FIREBALLS**
 STAMINA.....**2HP**
 SEX.....**FEMALE**
 HEIGHT.....**5'8"**
 WEIGHT.....**125 LBS**
 AGE.....**21**



TREASURES AND HEALTH POINTS TO BE FOUND

Each time Endrick or Elandra gets hit, he or she loses half a health point. Should one of them be reduced to zero, they will die and you will have to restart the level. So, grab all the health points you can!



Steel Coin
50 Points



Pouch of Coins
100 Points



Pearl Necklace
200 Points



Golden Chalice
500 Points



Diamond Ring
1000 Points



Partial Flask
1 Health Pt



Full Flask
Full Health Pt



Blue Potion
(poisons hero)

MAGIC ARTIFACTS

Throughout your adventure, you will see Mana Gems floating in the air. Each fireball Elandra casts costs one Mana Gem each, so collect as many of them as you can. Mana Gems can also be used to activate different magic artifacts that will help you along your way.



Mana Gem



Invincibility Shield
15 Gems



Magic Shield
25 Gems



Death Blast
25 Gems



Power Up
50 Gems

REALMS OF CHAOS

SOME LAST MINUTE CHEATS!

Who says cheaters never win? Here are a few of the cheat keys that may help you along your way.

For each cheat code, press the **BACKSPACE** key, then type in this word:

FIRE : Weapons for both characters powered up to full strength

RAIN : Health fully recharged

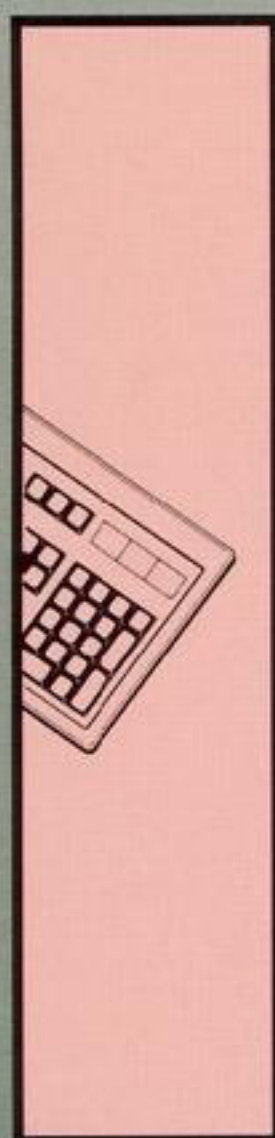
ASTRAL : Mana Gems are raised to 250

ETHER : Warp to new level

WIND : Invincibility. Typing the code again will turn it off. *Note: Spikes, crushing weight, & drowning will still kill you.*

CONTROLLING THE ACTION

Realms of Chaos is compatible with a variety of input devices. If you prefer, you can play the game by using a keyboard, joystick, or GamePad. The following outlines the player input actions and the functions they control:



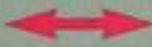


KEYBOARD

CONTROL KEYS

| | |
|--------------------------|---|
| Left or Right Arrow Keys | Moves your character left or right |
| Down Arrow | Aim downward, crouch, and descend vines or chains |
| Up Arrow | Aim upward, grab and climb vines or chains |
| PgUp/PgDn | Look up or down |
| Spacebar | Change between characters |
| Ctrl (Jump) | Character jumps (Hold down longer to jump higher) |
| Alt (Attack) | Shoot fireballs or swing sword |
| QUICK KEYS | |
| Esc | Exit to the Main Menu |
| F1 | Help |
| F2 | Saves the game in progress |
| F3 | Restores a previously saved game |
| F4 | Adjust the sound effects |
| F5 | Toggle the health points and Mana Gem display |
| F6 | Shows score, current level, character health, Mana Gems |
| F8 (Quicksave) | Saves game using same file description as last saved game |
| F9 (Quickload) | Loads the last game saved or loaded |
| F10 | Quits and allows you to exit to DOS |



JOYSTICK

| | | |
|-----------|--|---|
| Movement |  | Moves your character left or right |
| Down only |  | Aim downward, crouch, and descend vines or chains |
| Up only |  | Aim upward, grab and climb vines or chains |
| Button 1 | | Character jumps (Hold down longer to jump higher) |
| Button 2 | | Shoot fireballs or swing sword |



GAME PAD

| | | |
|-----------------------------|--|---|
| Movement | | Moves character left, right, up, and down |
| Button 1 | | Character jumps (Hold down longer to jump higher) |
| Button 2 | | Shoot fireballs or swing sword |
| Button 3 | | Change between characters |
| Button 4 & Up/Down Movement | | Look up or down |

REALMS OF CHAOS

DO YOU REQUIRE FURTHER TECHNICAL ASSISTANCE?

As a registered user of *Realms of Chaos*, you are welcome to contact our Technical Support and Hints Department for any assistance required. Technical support and hints may be received by calling **(214) 278-5655**, Monday through Friday, between 8:00 a.m. and 6:00 p.m., Central Standard time. Or fax us at **(214) 278-4670**, 24 hours a day. If you prefer to write, send correspondence to:

**Apogee Software, Ltd.
Technical Support / Game Hints Department
P.O. Box 496389
Garland, TX 75049-6389**

To assist us in providing you with faster service, please have your order number ready and be at your computer system when you make the call. Written inquires should include your order number, system type and accessories, and printed copies of your CONFIG.SYS and AUTOEXEC.BAT files.

Please do not call the 800 number for technical support or game hints as this information will not be provided on this line.

There is a file included with the *Realms of Chaos* game disks which contains some basic technical support information. This file is named ROCHELP.EXE. If you are having difficulty executing *Realms of Chaos* once it has been installed, please consult this file before you call Apogee. The file contains solutions to the most commonly encountered problems of our customers.

THANKS FROM APOGEE!

All of us at Apogee would like to express our sincere appreciation for your purchase of this game. Much time and effort goes into the development of our software, and your support ensures that we can continue to offer quality software entertainment.

APOGEE SOFTWARE

Apogee Software, Ltd. is the publisher of *Realms of Chaos* and other cool VGA action games for IBM® and compatibles. For information about all the products available from Apogee call **1-800-APOGEE 1**—ask for a catalog.

WHERE TO FIND US ONLINE

Internet/WEB Site

<http://www.apogee1.com>

E-Mail: apogee.software@apogee1.com

America Online

Keyword "APOGEE"

E-Mail: Apogee

Software Creations BBS

(508) 368-6604

(508) 368-7036

Conf. 1 E-Mail: Apogee Software

CompuServe

Keyword "GO APOGEE"

E-Mail: 74200,553

COPYRIGHTS AND TRADEMARKS!

Realms of Chaos © Copyright 1995 by Apogee Software, Ltd. All other trademarks are the property of their respective owners.



CREDITS

PROGRAMMING/ GAME DESIGN

KEITH SCHULER

GAME ENGINE

FRANK MADDIN

GAME ART

CYGNUS MULTIMEDIA PRODUCTIONS

SUSAN SINGER

DIRK JONES

ERINN DAY

STEPHANIE PEADEN

SOUND CODE

JIM DOSE

MUSIC/SOUND

BOBBY PRINCE

COVER ILLUSTRATION

LES DORSCHIED

GRAPHIC DESIGN

MICHAEL HADWIN

